

Internet Browsers Supporting CPF EZPay

1. What are the internet browsers that support CPF EZPay?

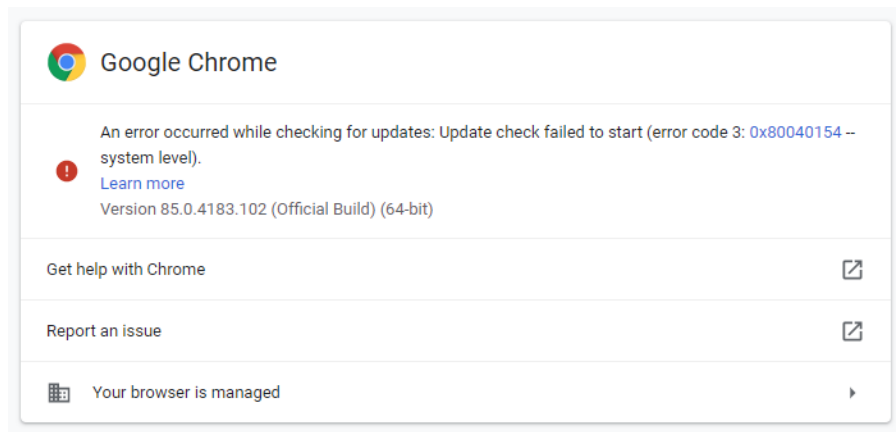
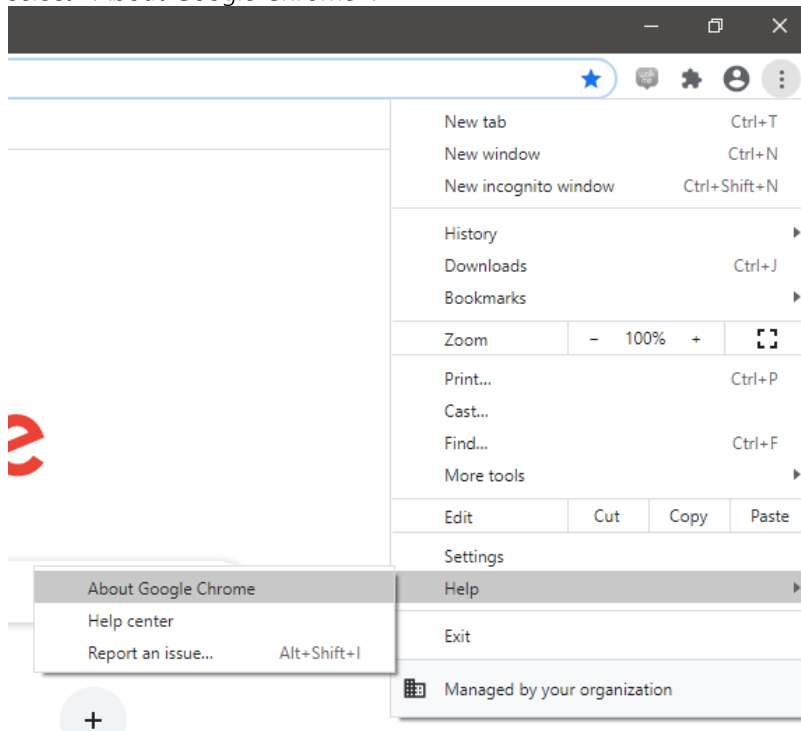
- Apple Safari version 14 and above
- Google Chrome version 67 and above
- Microsoft Edge version 80 and above
- Microsoft Internet Explorer version 10 and above
- Mozilla Firefox version 46 and above

2. How do I check the version of my internet browser?

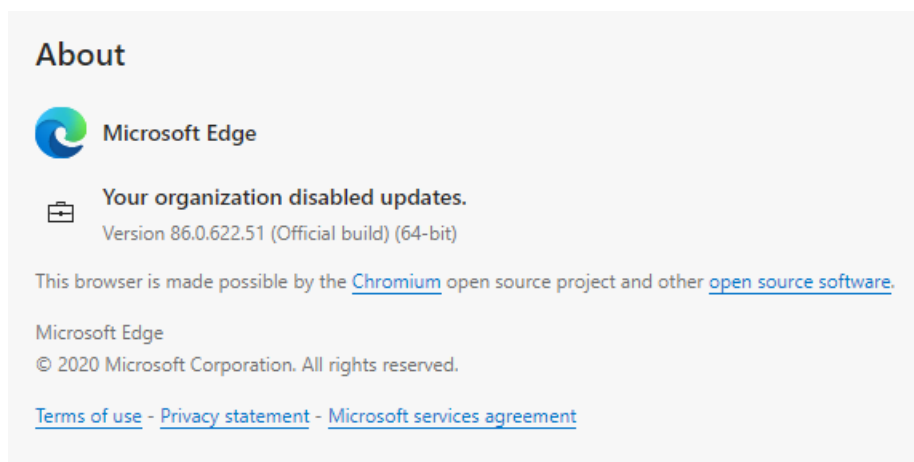
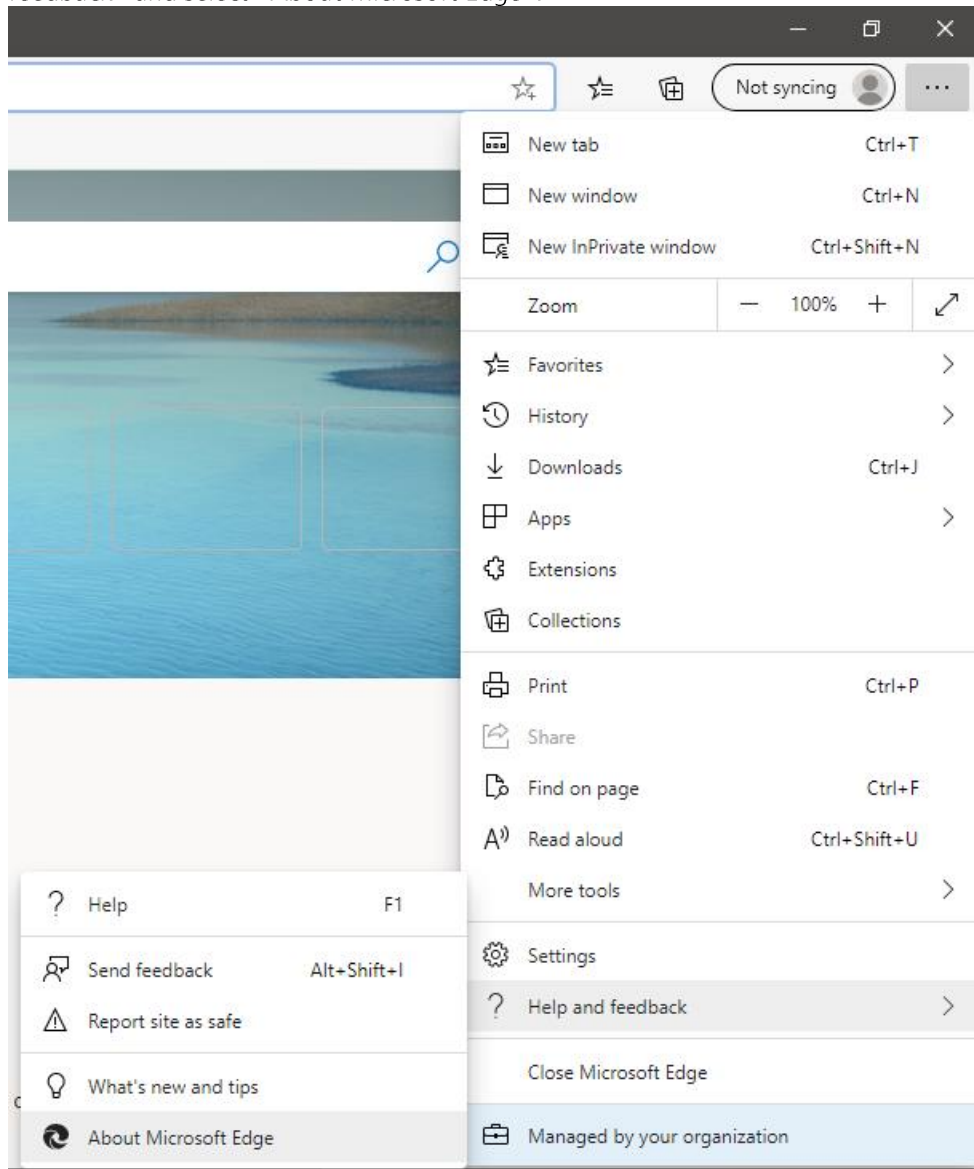
- **Apple Safari:** Click on "Safari" on the menu bar and select "About Safari".



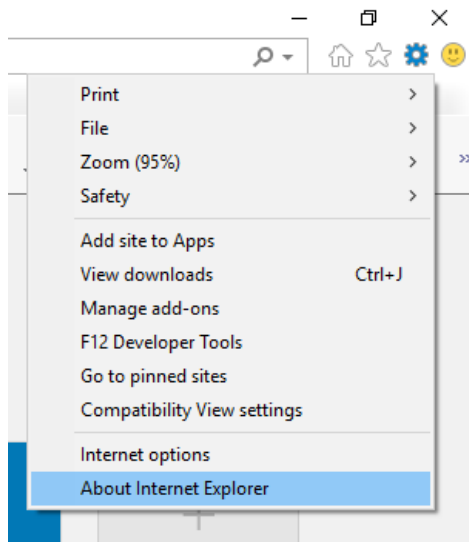
- **Google Chrome:** Click on the menu icon at the top-right corner then click on "Help" and select "About Google Chrome".



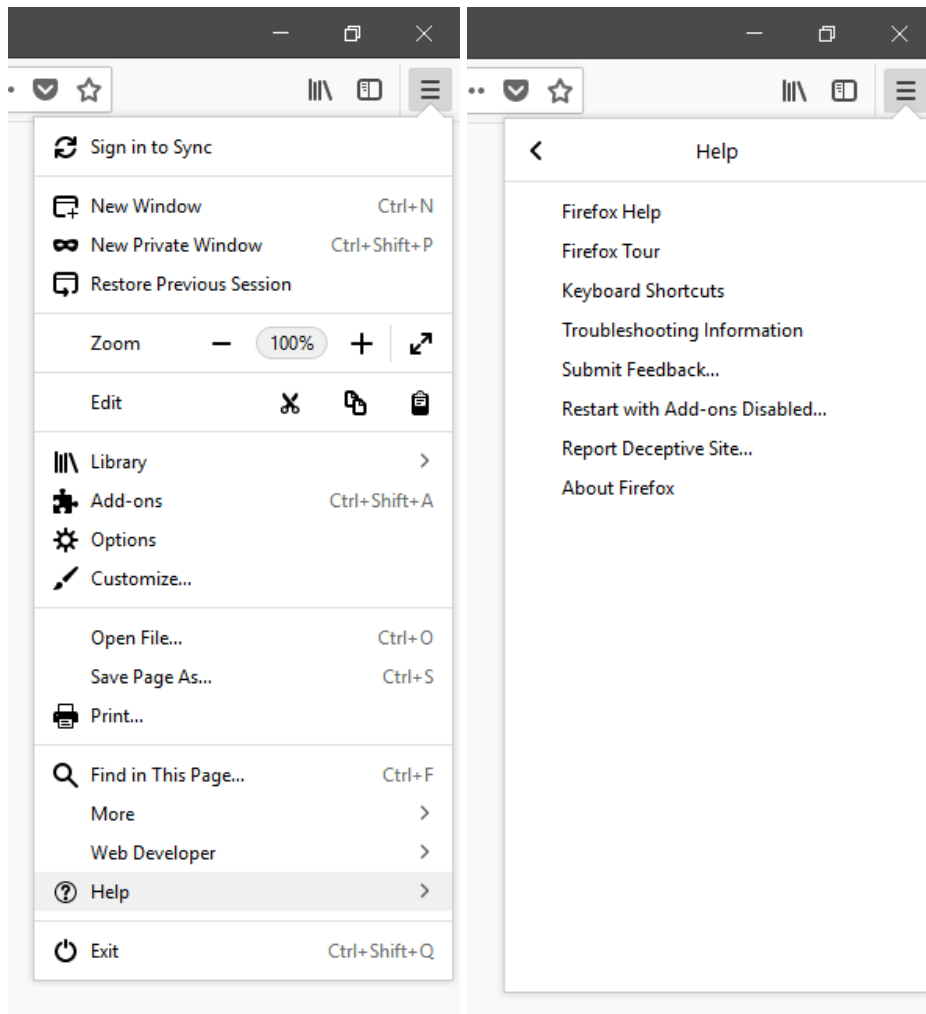
- **Microsoft Edge:** Click on the menu icon at the top-right corner then click on “Help and feedback” and select “About Microsoft Edge”.



- **Microsoft Internet Explorer:** Click on the gear icon at the top-right corner and select "About Internet Explorer".



- **Mozilla Firefox:** Click on the menu icon at the top-right corner then click on “Help” and select “About Firefox”.



3. How can I update my internet browser?

To update your internet browser, please visit the respective websites:

- Apple Safari: <https://support.apple.com/en-us/HT204416>
- Google Chrome: <http://www.google.com/chrome/>
- Microsoft Edge: <https://www.microsoft.com/en-us/edge>
- Microsoft Internet Explorer: <https://support.microsoft.com/en-us/help/17621/internet-explorer-downloads>
- Mozilla Firefox: <https://www.mozilla.org/>